

Installation - 907CAM OEM Camera Integration to Aftermarket Radio

Guide for installing 907CAM harness to move OEM camera image from mirror to aftermarket radio screen for 2019 Mercedes Sprinter Vans (907)

Written By: Noah Thatcher



Step 1 — Remove plastic cover above mirror



- Unclip plastic cover around mirror mount and lower slightly
- Unclip center piece of plastic and set both pieces aside
- ① This step is also required for installation of the 907ANT factory camera adapter- so if also installing that harness, it is recommended to make that you leave this area disassembled until you run 907ANT harness into headliner

Step 2 — Locate and un-plug factory camera cable



- Locate 6 pin camera cable mounted on left side of bracket
- Un-plug the 6 pin black camera plug

Step 3 — Camera connection to factory cable



- Plug black 6 pin factory camera cable into 6 pin socket on 907CAM harness

Step 4 — Route cable to 'A' pillar



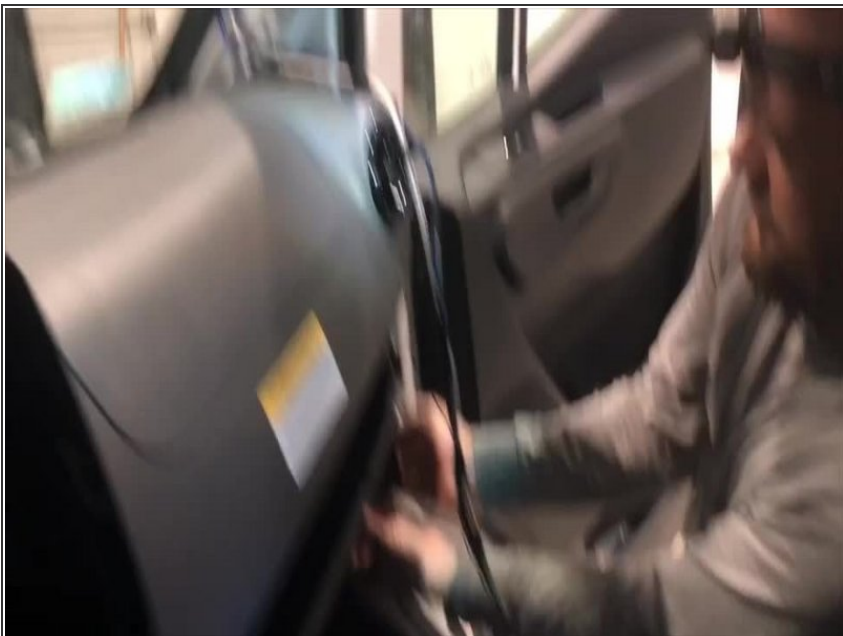
- Using hand to pull headliner down along windshield, run cable along headliner to 'A' pillar
- i** This step through step 8 are also required for installation of the 907ANT factory antenna adapter- so if also installing that harness, it is recommended that the harnessing is run at the same time

Step 5 — Run cable down 'A' pillar



- Remove trim along 'A' pillar
- Run and secure cable down 'A' pillar

Step 6 — Remove small panel and door seal at end of dash



- Remove small plastic panel at end of dash
- Pull off door seal

Step 7 — Remove passenger side knee bolster



- Remove 3 x T20 screws along top of bolster pocket
- Remove 2 x T20 screws along right side of knee bolster
- Remove 3 x T20 screws along bottom of knee bolster
- Pull knee bolster panel from dash and set aside

Step 8 — Route cable to radio cavity



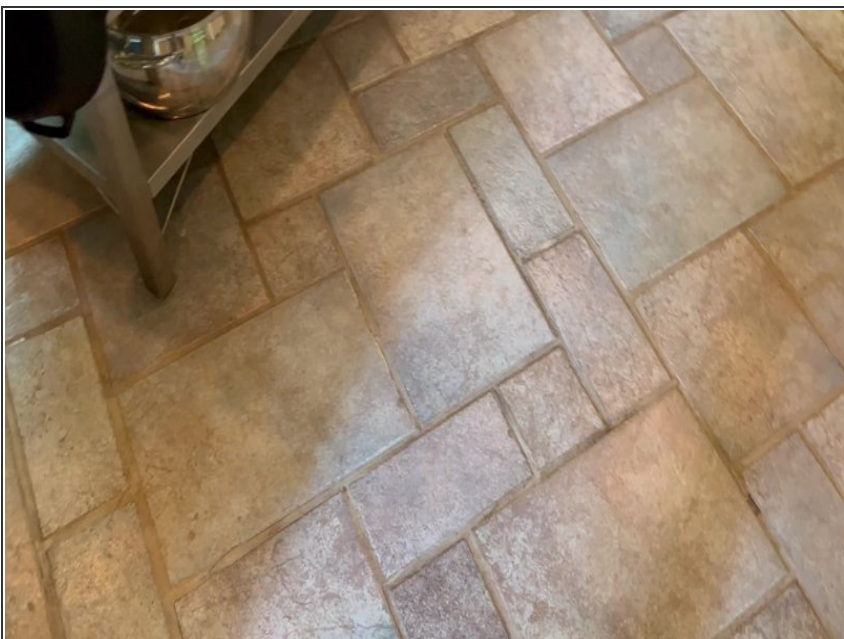
- Route cable through dash and behind where radio will be mounted

Step 9 — Connections to radio



- Plug male RCA from harness into camera input on radio
- Connect blue wire to reverse trigger on radio
- ① It may be necessary to add a relay to the reverse wire. If the camera image is not staying on consistently, is of diminished quality, or cuts out. [Add a relay per these instructions.](#)

Step 10



- Insert wisdom here.