

# SKSNG447D4T Metris Remote Start & Alarm Installation

Installation instructions for the SKSNG447D4T remote start and alarm module for Mercedes Metris 2016-2023

Written By: Noah Thatcher

## INTRODUCTION

This guide provides step by step installation and operation instructions for installing a remote start on the Mercedes Metris 2016-2023. The remote start includes basic alarm and can be integrated with Compustar Drone/ Directed Smart Start for smart phone control, Compustar /Directed RF remotes, and a Compustar DAS sensor for added security.

### Installation requires the following steps:

- Removal of the EIS
- EIS modification. Note: we highly recommend that the EIS be sent to Mid City Engineering for modification. If you wish to perform modification, please contact us at 312-421-1114 or [sales@midcityengineering.com](mailto:sales@midcityengineering.com) for more information

### OPTIONAL steps:

- Compustar Drone connection
- Compustar RF remote connection
- Compustar DAS sensor connection

## Step 1 — Remove trim around radio



- Remove bezel around radio

## Step 2 — Remove EIS



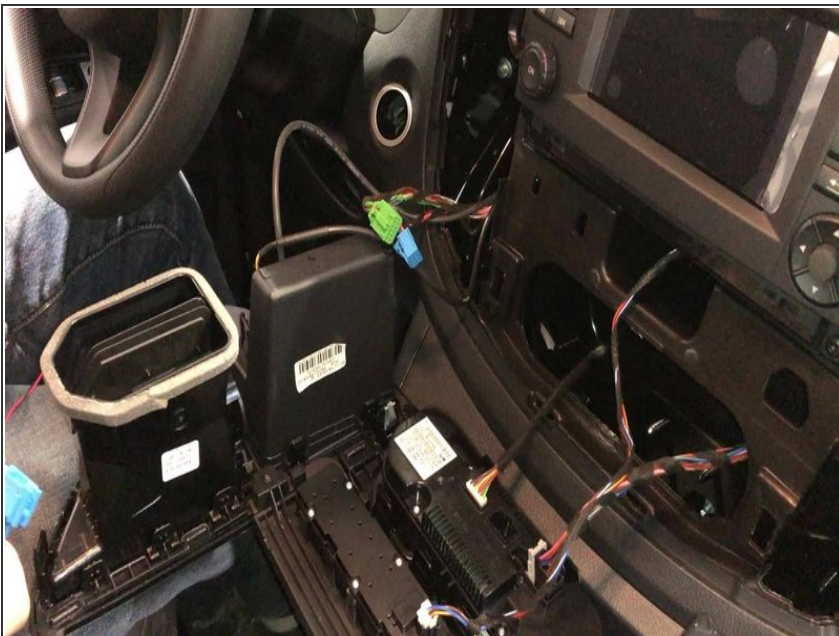
- Reach through cavity to left of radio grab EIS
- The EIS has one tab on the top and one tab on the bottom- squeeze the tabs toward the middle of the cylinder and pull EIS out of dash towards hood
- Remove EIS from dash and un-plug green 12 pin plug
- Remove blue 8 pin plug

### Step 3 — EIS modification



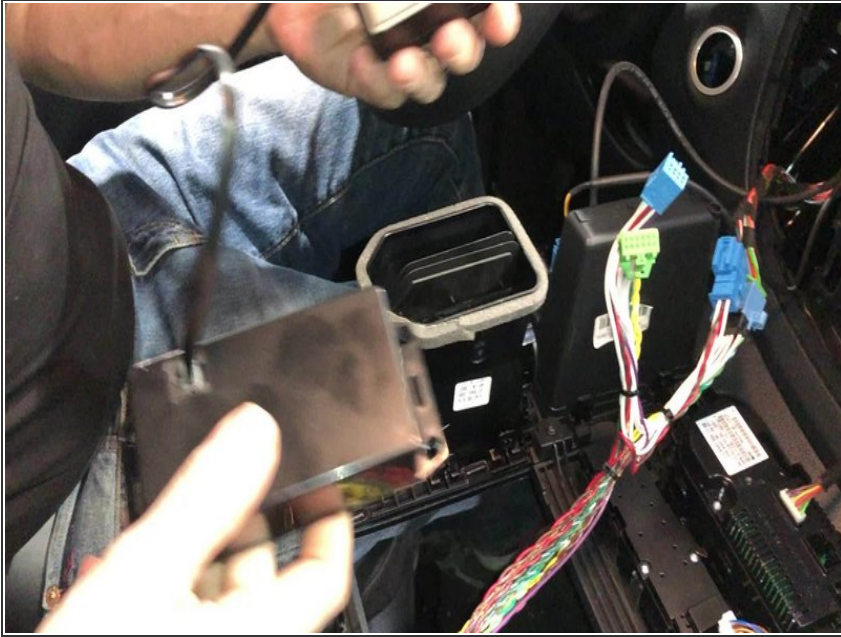
- ❗ The SKSNG447D4T requires an EIS modification. It is highly recommended that the EIS be sent to Mid City Engineering for modification
- ❗ If you wish to perform modification without sending Mid City Engineering the EIS, please call 312-421-1114 or email [sales@midcityengineering.com](mailto:sales@midcityengineering.com) for more information

### Step 4 — Connect factory harnessing to T-harness plugs



- Plug 8 pin factory blue plug that was removed EIS into 8 pin blue socket on supplied T-harness
- Plug 12 pin factory green plug that was removed EIS into 12 pin green socket on supplied T-harness

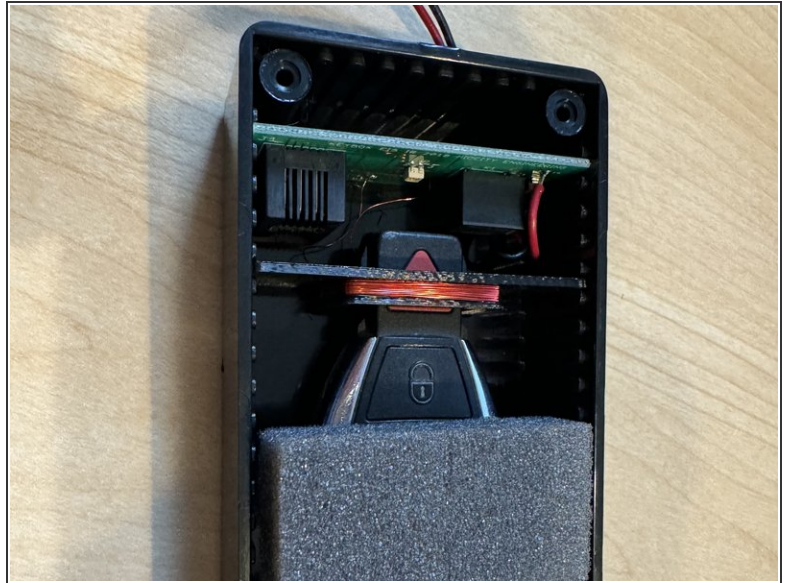
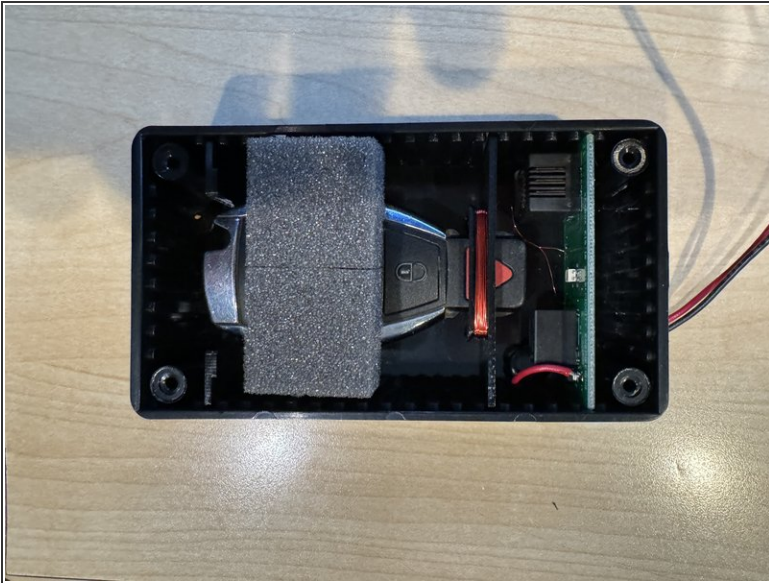
## Step 5 — Connect T-harness to EIS



- Plug 12 pin green plug from T-harness into 12 pin socket on rear of EIS
- Plug 8 pin blue plug from T-harness into 8 pin socket on rear of EIS



## Step 6 — Place spare key in key box



- Remove battery from key
- ⓘ Insert key in key box as shown in picture. The key must be in the positioning shown in the picture.
- ✦ Close and secure key box lid with provided screws
  - ⓘ If the key box lid is not closed and any light is getting into the box, the remote start will not work.

## Step 7 — Connect T-harness & key box to module



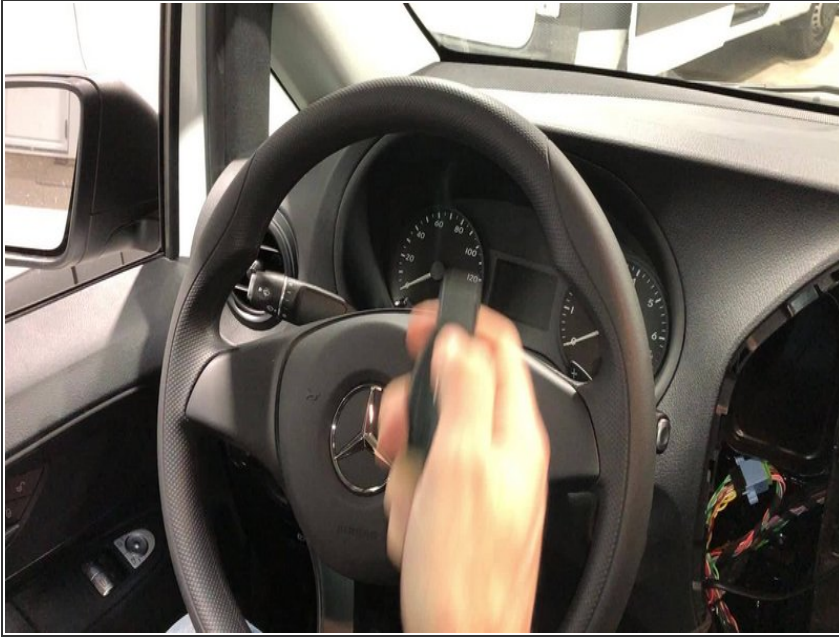
- Connect 20 pin connector from T-harness to 20 pin connector on SKSNG module
- Plug 2 pin white plug from supplied key box to 2 pin white connector on SKSNG module

## Step 8 — Re-mount EIS into dash



- Route EIS through left side of radio cavity and into dash

## Step 9 — Test remote start operation



**⚠ Make sure that doors are closed and vehicle is in safe position to start**

- On factory key fob hit 'lock-unlock-lock'

## Step 10 — Test alarm operation - lock doors



- From inside vehicle with all doors closed, hit 'lock' on OEM fob
- Parking lights should flash 3 times and the doors should lock



## Step 11 — Test alarm operation - trigger door pin



- Open door from inside handle- siren should sound and parking lights should flash

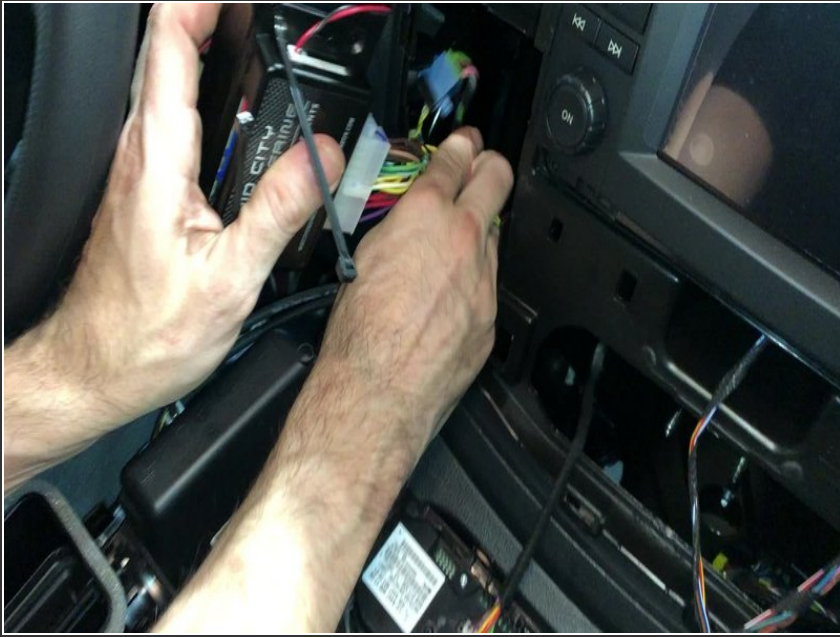
## Step 12 — Mount key box to SKSNG module



- Use zip ties to mount key box module and NG module together



## Step 13 — Mount module



- Mount harnessing and module

**⚠ Be sure to mount module away from any heat sources or moving parts**

## Step 14 — OPTIONAL - DAS sensor connection



- ❗ A Compustar DAS sensor can be added for shock, tilt, and vehicle movement security. This will integrate into the alarm included with the starter
- Plug 4 pin cable from DAS sensor into 4 pin red plug on SKSNG module
- Mount DAS sensor per Compustar instructions

## Step 15 — OPTIONAL - test DAS sensor



- Lock doors with OEM key fob
- Apply impact to vehicle chassis - siren should alarm

## Step 16 — OPTIONAL - Compustar RF remote / antenna connection



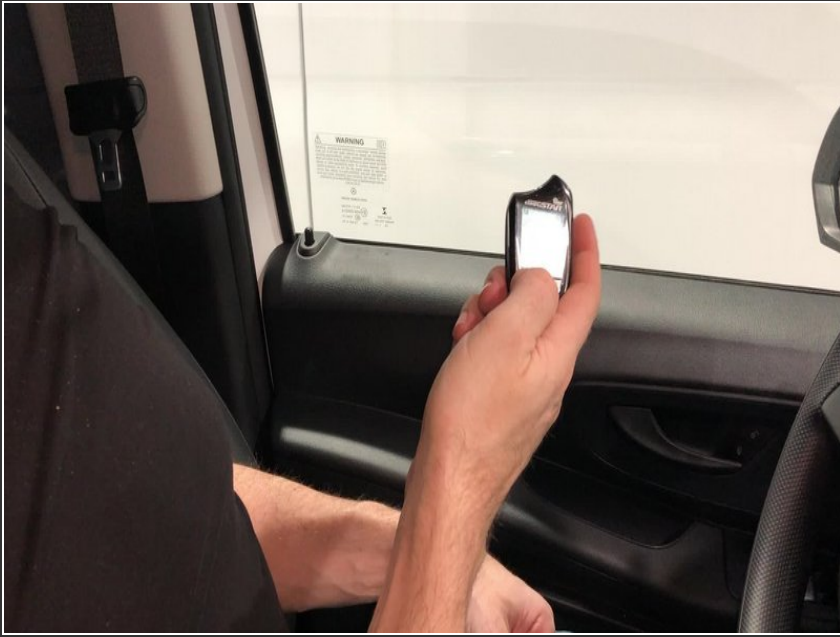
- ❗ A Compustar RF remote and antenna kit can be added for external control of remote start, alarm, and door locks.
- Plug Compustar antenna cable into 4 or 6 pin blue plug on SKSNG module

## Step 17 — OPTIONAL Compustar RF remote connection - remote programming



- Insert key and cycle from 'OFF' to 'IGNITION' (2nd position) 5X (ending in the 'OFF' position)
- After 5th cycle, hit the 'LOCK' button on each Compustar RF remote that is being programmed (programming 2-way remotes first)



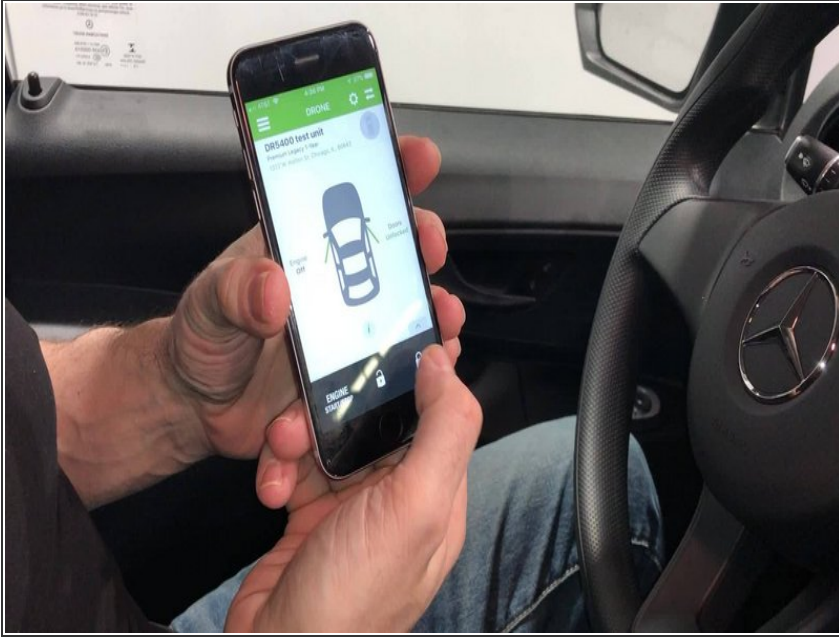
**Step 18 — OPTIONAL Compustar RF remote connection - test RF remote controls**

- Using Compustar RF fob, test lock, unlock and start controls

**Step 19 — OPTIONAL DRONE CONNECTION - Connect Drone to SKSNG module**

- Connect 4 pin connector from Compustar Drone module to 4 pin black plug labeled 'DRONE' on the SKSNG module

## Step 20 — OPTIONAL DRONE CONNECTION - test controls from app



- Using Compustar Drone app, test lock, unlock and start controls

## Step 21 — Replace bezel around radio



- Replace bezel and vents around radio and clip into place