

Installation Instructions for LVDS205

Installation instructions for LVDS205205 camera and video interface for NTG5.0

Written By: Noah Thatcher

Step 1 — Remove silver trim piece



- Pull out silver trim piece on center console

Step 2 — Remove 2 screws



- Remove 2 screws from under center console trim piece

Step 3 — Remove console



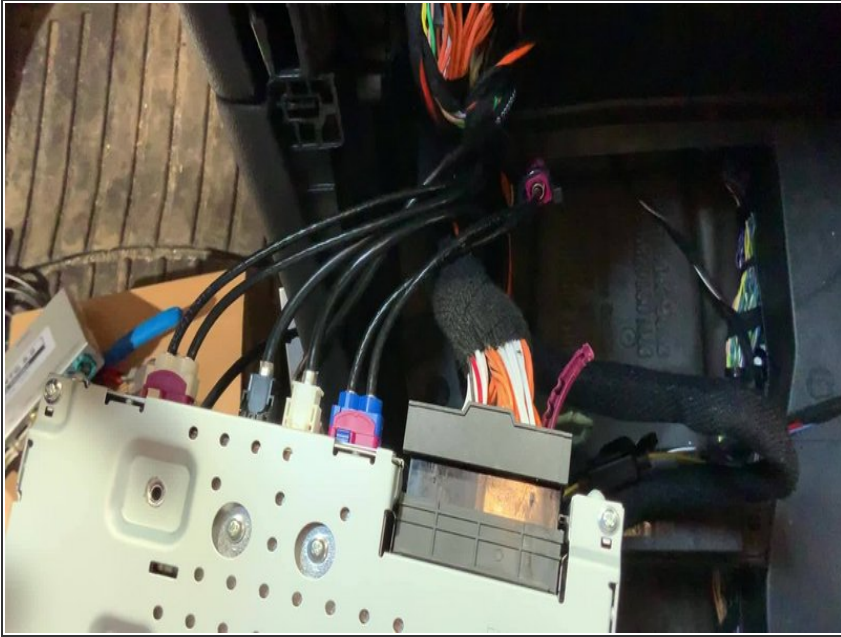
- Remove control console and set aside

Step 4 — Remove radio



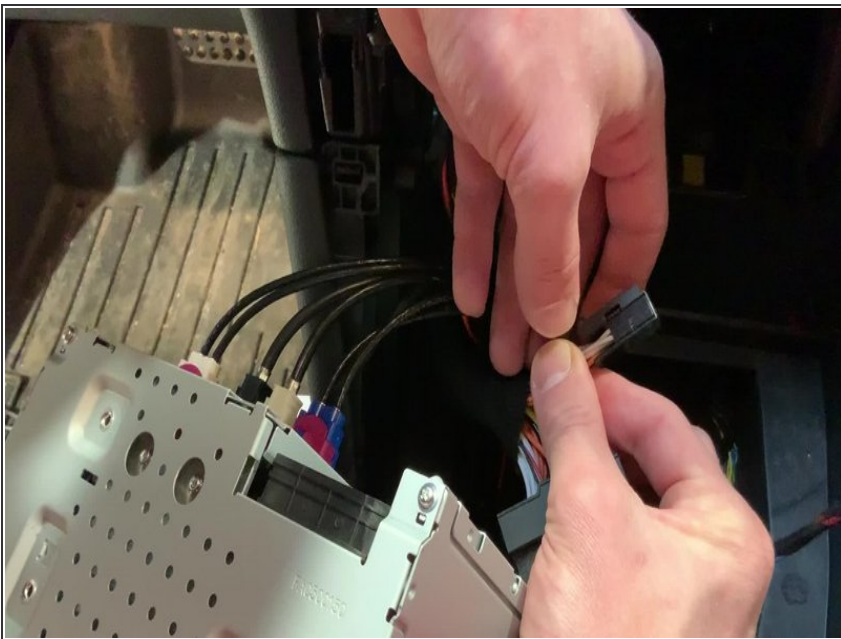
- Remove 2 screws securing bars
- Pull out radio

Step 5 — Remove black plug from rear of radio



- Remove latched plug from behind radio
- Remove black 8 pin plug

Step 6 — Remove black shroud



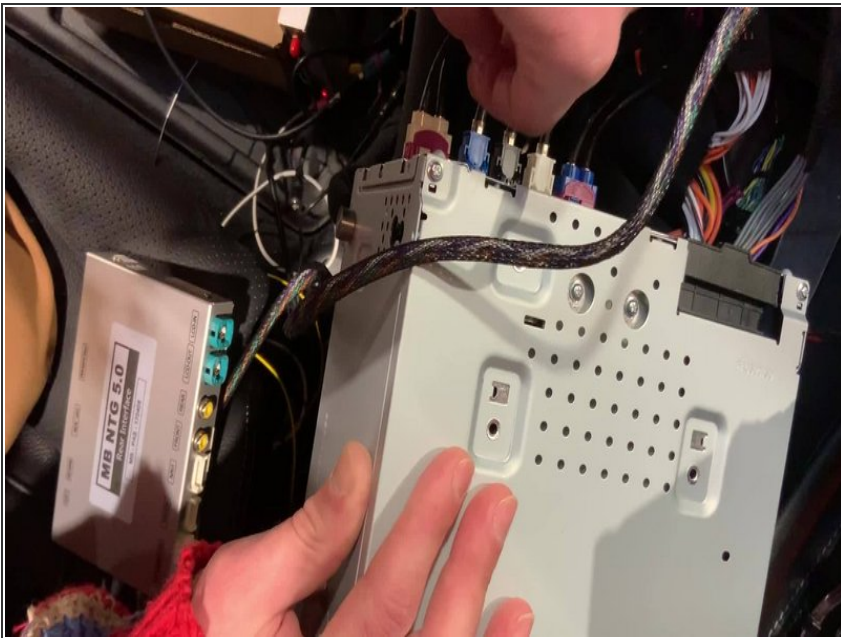
- Remove shroud from black plug

Step 7 — Install T-harness



- Connect T-harness to radio

Step 8 — Connect LVDS out to module



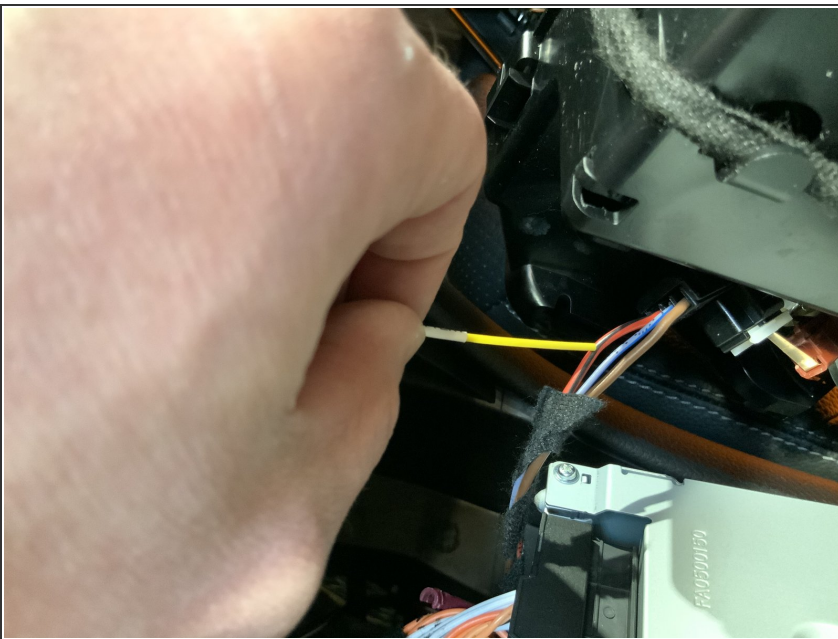
- Un-plug blue LVDS plug from radio (going to screen)
- Connect to LVDS out on LVDS205 module

Step 9 — Connect LVDS in



- Using provided video cable, connect one end to video connector where plug was removed in step 5
- Connect other end of cable to 'LVDS IN' port on LVDS205 module

Step 10 — Connect power



- Connect yellow wire to ignition power source at cigarette lighter

Step 11 — Connect ground



- Connect black wire to ground wire behind cigarette lighter

Step 12 — Connect main harness



- Connect main harness to LVDS module

Step 13 — Video connections



- Connect backup / front camera to appropriate input