

# SKSNG205D4 & SKSNG222D4 EIS Jumper & Pin Installation Instructions

Instructions for jumper installation needed for SKSNG205D4 & SKSNG222D4 SmartKey Starter® for W205 / X205 / W222 C Class, GLC, & S Class

Written By: Noah Thatcher

## INTRODUCTION

**To install the SKSNG205D4 or SKSNG222D4 SmartKey Starter® remote start, a jumper wire and pin installation is required. Please read information below and entire guide before attempting this installation. Mid City Engineering will install the jumper free of charge with purchase of SKSNG205D4 or SKSNG222D4. Please call 312-421-1114 ext. 1 or email [sales@midcityengineering.com](mailto:sales@midcityengineering.com) for more information**

DO NOT ATTEMPT THE JUMPER / PIN INSTALLATION IF YOU DO NOT HAVE THE PROPER SOLDERING EQUIPMENT OR EXPERIENCE. A TEMPERATURE CONTROLLED SOLDERING IRON AND BOARD LEVEL SOLDERING EXPERIENCE IS REQUIRED . SEE BELOW DOCUMENT FOR EXAMPLES OF THE CORRECT SOLDERING EQUIPMENT TO USE. THE EIS HAS COMPONENTS THAT ARE STATIC SENSITIVE- BE SURE TO USE PROPER GROUNDING TECHNIQUES WHILE WORKING ON THE EIS.

DO NOT OVERHEAT COMPONENTS. RECOMMENDED TEMPERATURE IS 750\* DEGREES F

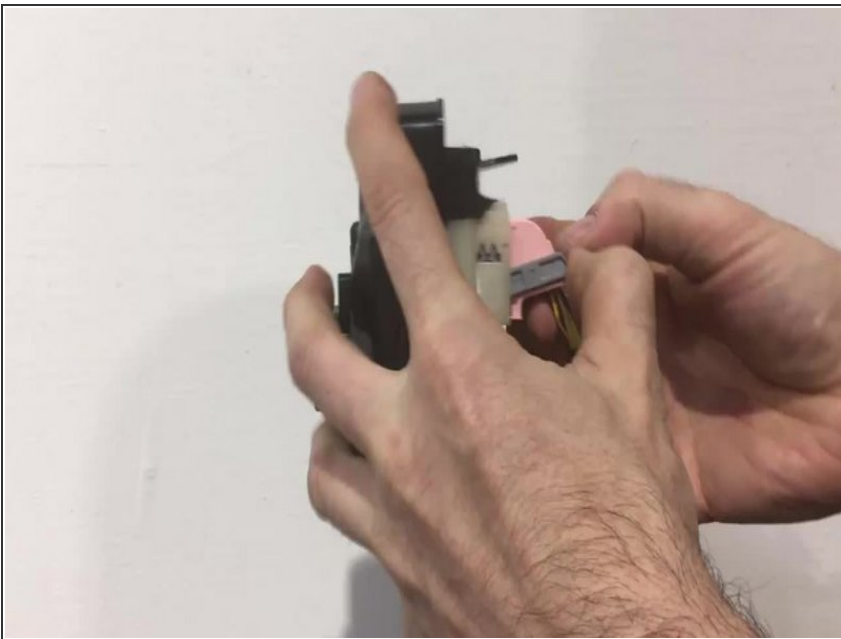
For the SKSNG205D4 installation guide, click here: [SKSNG205D4 Remote Start Installation Manual for 2015-2018 C Class & 2016-2019 GLC](#)

## Step 1 — Remove EIS



- Remove EIS (electronic ignition switch) from dash
- ① For EIS removal instructions, refer to SKSNG205D4 installation manual here: [SKSNG205D4 Remote Start Installation Manual for 2015-2018 C Class & 2016-2019 GLC](#)

## Step 2 — Remove harnessing from rear of EIS



- Un-latch 40 pin connector and unplug from EIS

### Step 3 — Remove front panel of EIS



- There are tabs at the top and bottom of the EIS. Squeeze the tabs towards the center of the EIS and push from the front (where the key would be inserted)
- Set aside front panel and safely place back panel in your soldering area (this is the board on which the jumper will be installed)

### Step 4 — Remove screws from rear of EIS



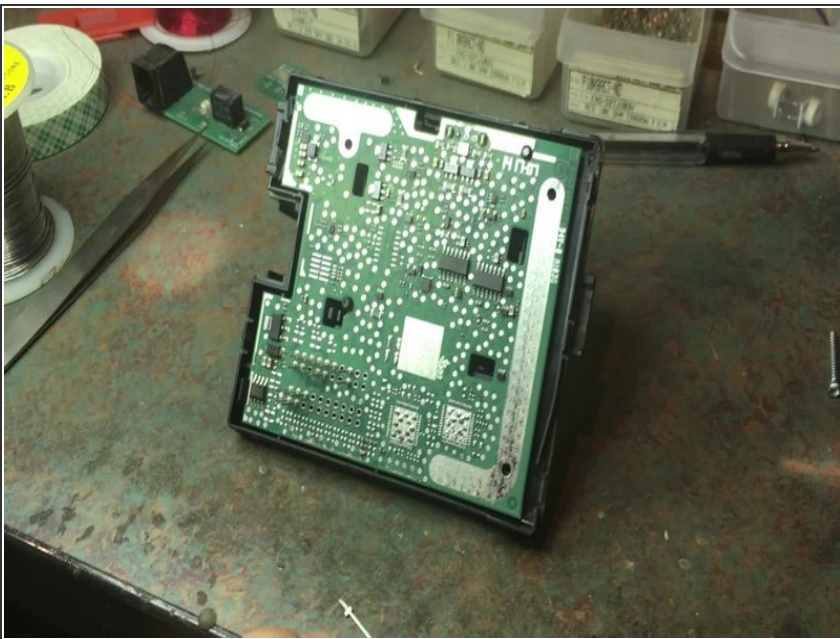
- ⚠ The EIS circuit board has static sensitive components. Be sure to use proper grounding practices when working with this board
- Remove 3X screws from rear of EIS

## Step 5 — Remove back panel from EIS



- ⚠ The EIS circuit board has static sensitive components. Be sure to use proper grounding practices when working with this board**
- Using a small flat head tool, gently pry rear of EIS away from interior body to gain access to EIS circuit board

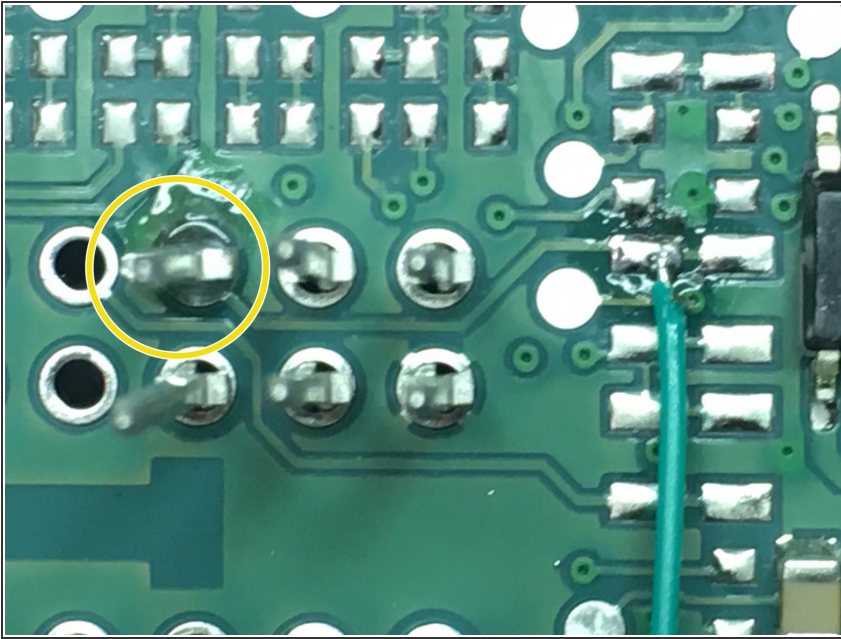
## Step 6 — Insert pin on EIS circuit board



- ⚠ The EIS circuit board has static sensitive components. Be sure to use proper grounding practices when working with this board**
- Place provided pin into location shown in video (go to next step for still picture of pin location)

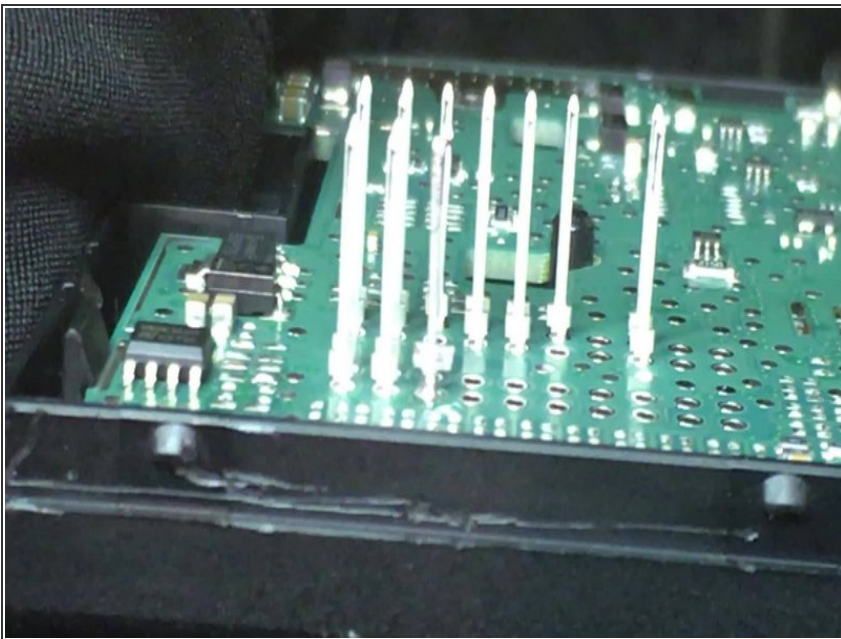


## Step 7 — Check pin location



- Check pin location to make sure it is in the correct position (see picture)

## Step 8 — Solder pin to board



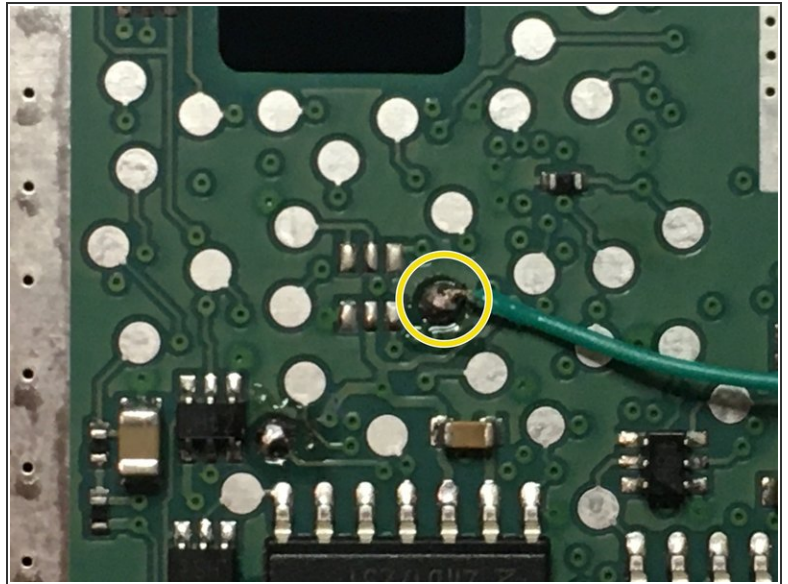
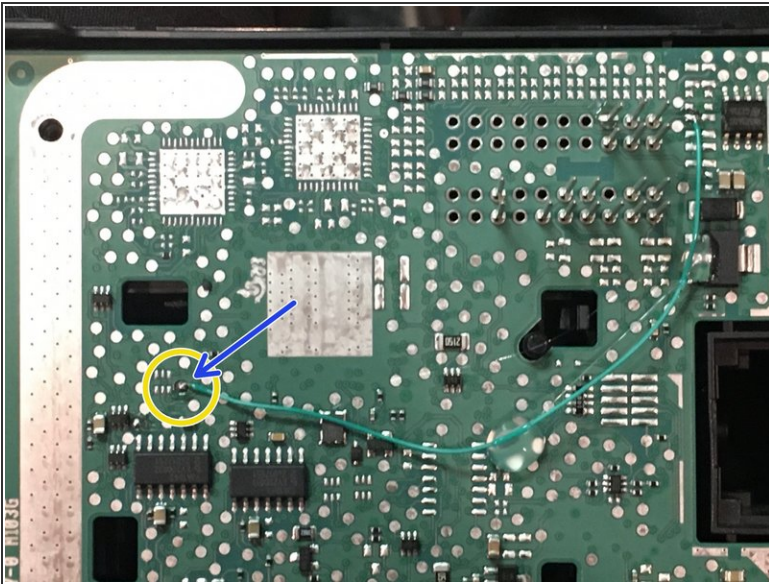
**⚠ ONLY USE A TEMPERATURE CONTROLLED SOLDERING IRON. SEE BEGINNING OF GUIDE FOR**

## INFORMATION ABOUT WHAT TYPE OF SOLDERING EQUIPMENT TO USE

⚠ Do not overheat EIS. Set  
soldering iron to 750 degrees F

- Solder provided pin to location on circuit board

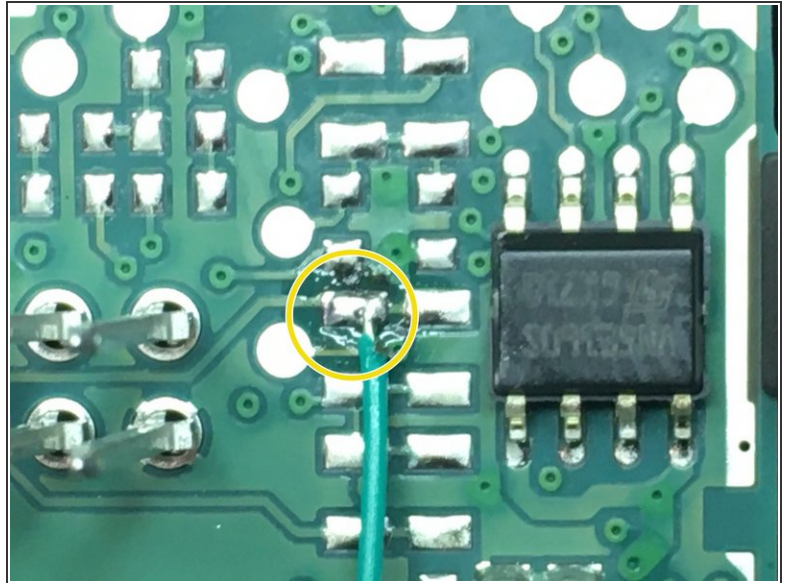
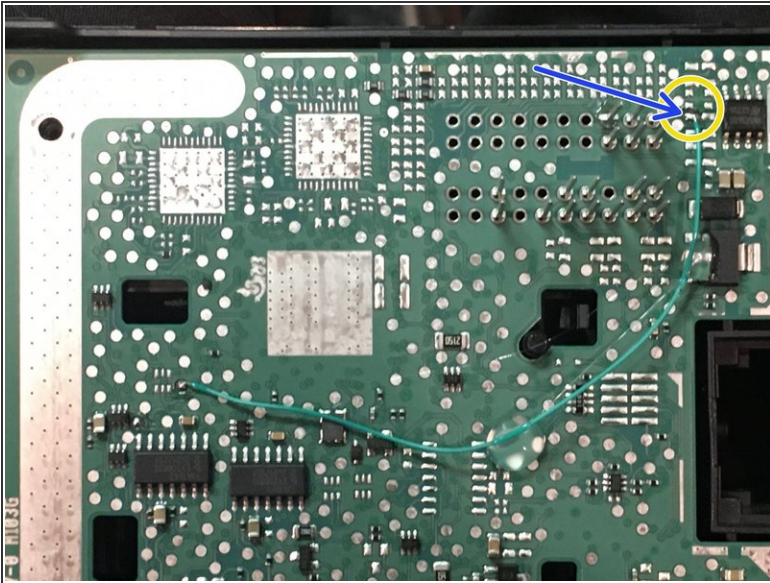
### Step 9 — Solder wire to first jumper point



- i** The SKSNG205D4 comes with a jumper wire. There are 2 points on the EIS board that the wire needs to be soldered to.
- Add solder to the first point (shown in picture)
  - Solder one end of the wire to the point

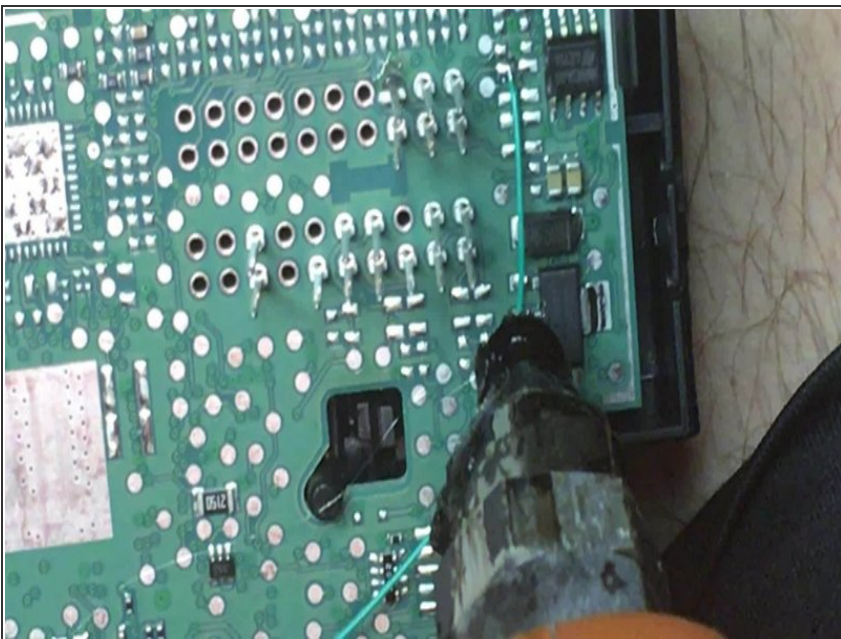


## Step 10 — Solder wire to second jumper point



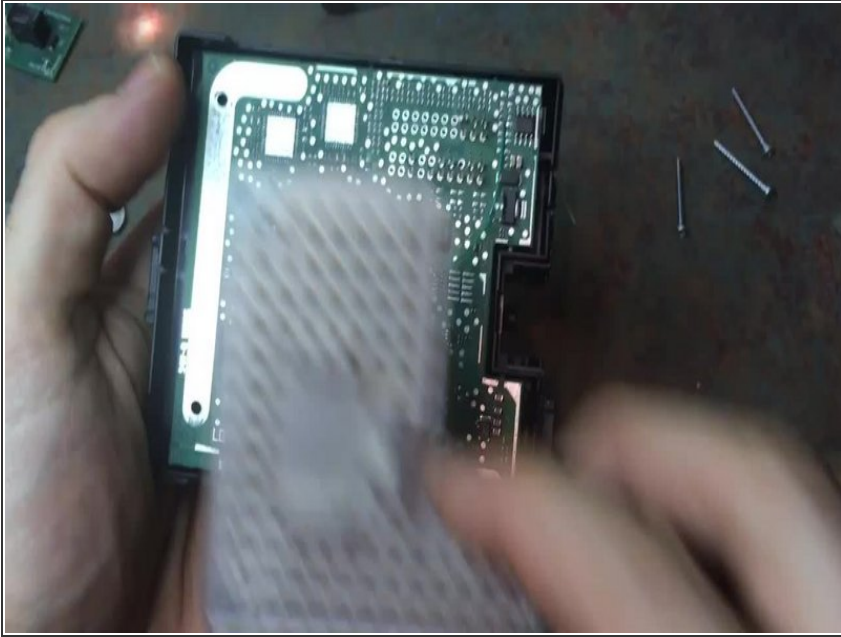
- Add solder to second jumper point (shown in picture)
- Solder other end of wire to point

## Step 11 — Secure jumper wire



- Using hot glue, carefully secure jumper wire to circuit board

## Step 12 — Re-assemble EIS and continue SmartKey Starter® installation



- Re-assemble EIS
- Continue SKSNG205D4 installation picking up on step 9. SKSNG205D4 installation instructions here:  
[SKSNG205D4 Remote Start Installation Manual for 2015-2018 C Class & 2016-2019 GLC](#)